

Question Bank

Software for Question Management

Question Bank for Windows is a powerful tool for monitoring the development, management and maintenance of Multiple Choice Questions, enabling academics and examination administrators to construct better assessments.



Question Bank is designed to work with MultiQuest for Windows, the examinations processing system from DRS. Question Bank supports various styles of Multiple Choice Questions and keeps statistics relating to question performance, along with the question's development history.

Tailored uses

Questions are held in libraries which are tailored to user's subject areas. A tree structure implementation enables each of these libraries to be further sub-divided into as many categories and sub-categories as required, for example:

- Pure Science
- Maths
 - Pure
 - Applied
- Physics
 - Particle
 - Astronomy and Space
 - Experimental Condensed Matter
 - Theoretical
- Chemistry
 - Organic
 - Inorganic
 - Physical
 - Theoretical

This overall structure is user defined and can be tailored to individual users' requirements, adding new library categories or sub-categories as appropriate.

How is Question Bank used?

Having designed the structure of the Question Bank, an examination administrator is able to:

- Allocate questions to a specific category or sub-category
- Enter, amend or delete questions
- Select questions for an assessment by manually browsing, randomly selecting or by defining and using an algorithmic procedure
- Generate examination papers
- After an assessment, import and keep the question performance statistics
- Produce reports for use at examiners' meetings
- Keep the question's development history - authored by..., changed by..., when and for what reasons etc.

What format can the questions take?

- Questions which are true/false
- Questions with a stem and a variable number of true/false items (e.g. 1 stem and 5 items true/false)
- Choose 1 from many (e.g. choose 1 from A, B, C, D or E)
- Extended matching
- Short written answers
- Modified essay questions
- OSCE (Objective Structured Clinical Examinations)
- Questions may also incorporate rich text, diagrams, mathematical and chemical formulae and pictures.

Microsoft
CERTIFIED
 Partner

Please note DRS products and services are subject to change without prior notice and that the information provided is for guidance only. DRS equipment complies with all current regulations. All trademarks acknowledged.

DRS Data Services Limited
1 Danbury Court, Linford Wood
Milton Keynes, MK14 6LR

☎ **+44 (0)1908 666088**
 ☎ **+44 (0)1908 607668**
 ✉ **enquiries@drs.co.uk**
 🌐 **www.drs.co.uk**

Question Bank

Software for Question Management

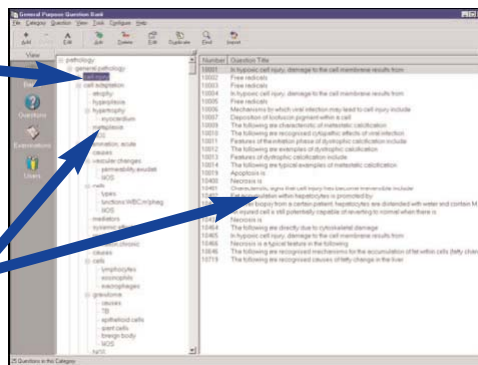
Question Bank uses the familiar Windows Explorer structure, enabling users to easily set up their question database. This structure can reflect the core sections of the users' study areas including subjects, core skills areas and competency levels. Navigation is easy and intuitive.

Question Bank Structure

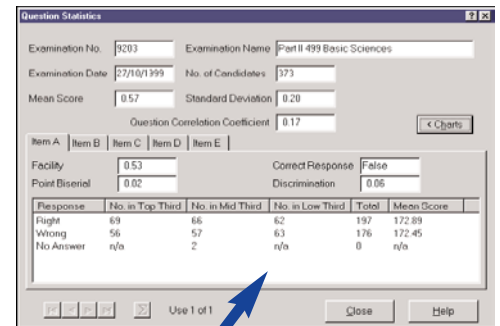
The questions available in the bank stored under this category heading.

Questions' categories are displayed as a tree structure.

These questions' categories are tailored to user's subject areas.



Question Bank Statistics

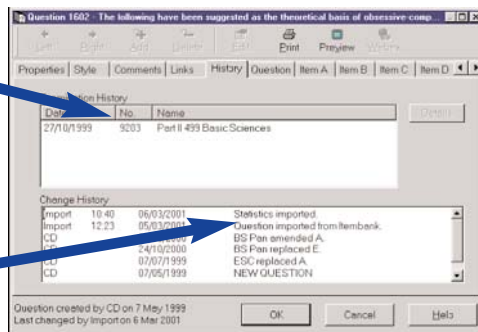


Question statistics are imported directly into Question Bank each time the question is used. The statistics are shown in numerical form giving detailed analysis of performance.

Question History

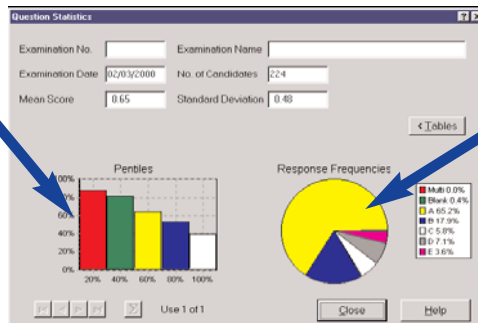
A log of when this question has been used is kept to enable users to examine the statistical performance on each occasion, particularly useful when developing and trialing questions.

The development history of each question is kept to show who authored the question, and if changes are made, when, by whom and for what reason.



Graphical Representation

The way the question discriminates between good and weak candidates is shown by dividing those that have done well, less well and poorly in the exam overall (the proportion is divided into 5- 20% groupings), and showing the proportion of candidates getting the answer correct within each group.



The frequency of all candidates' responses to a particular question, highlighting the proportion of candidates getting the question right and the quality of distracters used.